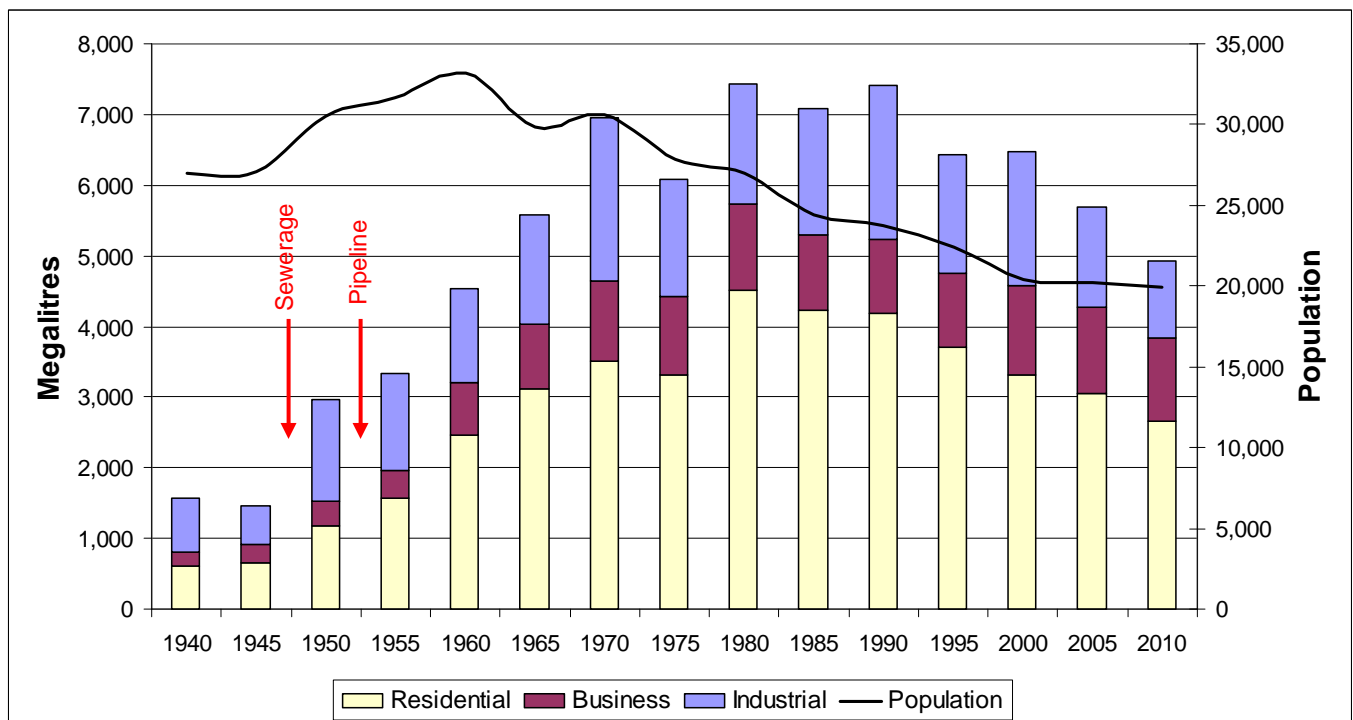


Broken Hill Water Consumption and Population since 1940

	Megalitres (ML)			
	Population	Residential	Business	Industrial
1940	27,000	615	187	771
1945	27,054	661	250	557
1950	30,500	1,188	330	1,450
1955	31,670	1,575	380	1,381
1960	33,210	2,466	735	1,340
1965	29,890	3,121	904	1,545
1970	30,620	3,513	1,133	2,303
1975	27,810	3,314	1,117	1,662
1980	27,030	4,509	1,219	1,703
1985	24,460	4,230	1,065	1,791
1990	23,776	4,178	1,058	2,184
1995	22,443	3,715	1,029	1,684
2000	20,429	3,310	1,276	1,893
2005	20,210	3,062	1,208	1,409
2010	19,960	2,664	1,169	1,083



Source: Broken Hill Water Board Annual Reports, NSW Water Supply Performance Reports, Australian Bureau of Statistics
(Some data estimated or extrapolated from other data sources or years)