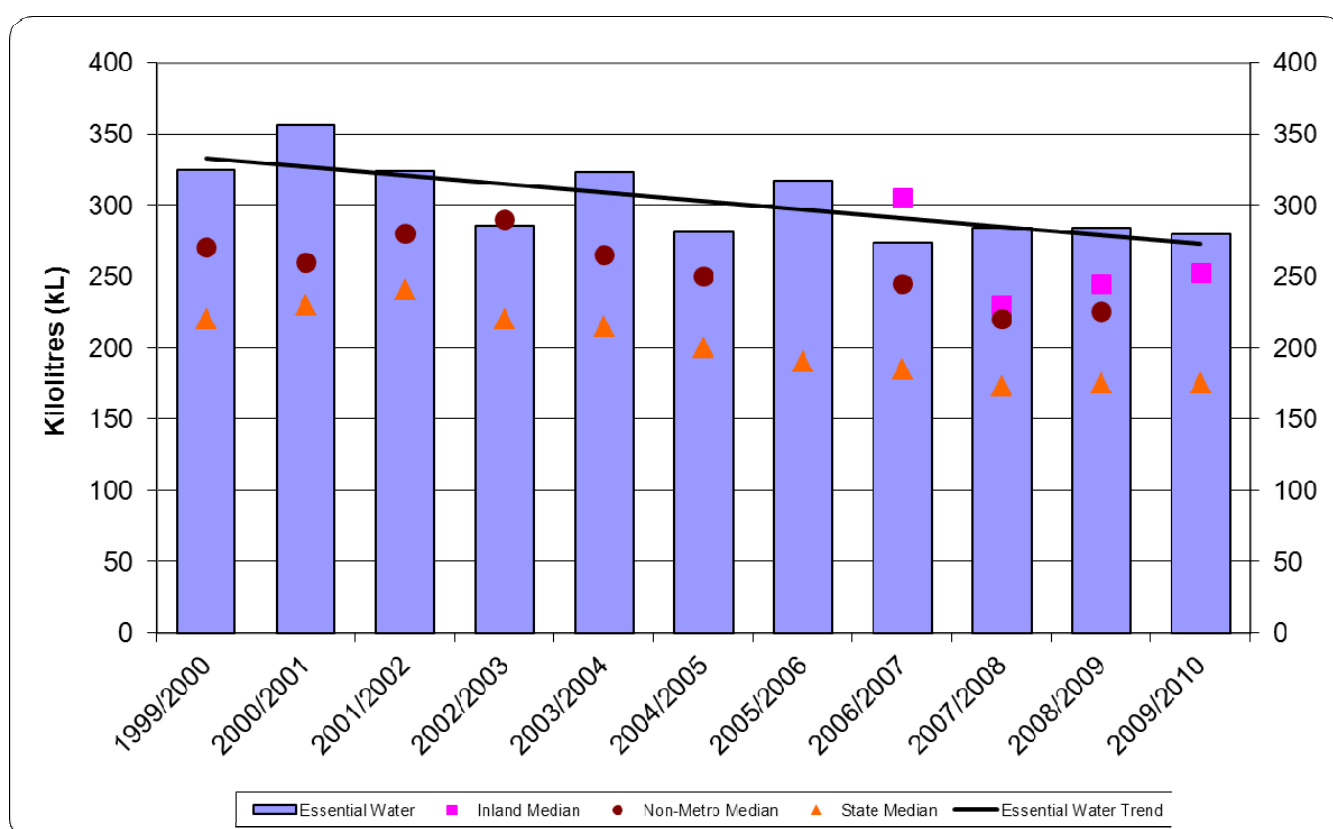


# Average Annual Residential Water Supplied Kilolitres per Property

The average annual residential water supplied is the average of potable or treated water supplied to residential customers within Essential Water's area of operations.

<i>Kilolitres (kL)</i>	Essential Water	State Median	Non-Metro Median	Inland Median
1999/2000	325	220	270	-
2000/2001	356	230	260	-
2001/2002	324	240	280	-
2002/2003	286	220	290	-
2003/2004	323	215	265	-
2004/2005	281	200	250	-
2005/2006	317	190		-
2006/2007	274	185	245	305
2007/2008	284	173	220	230
2008/2009	284	175	225	245
2009/2010	280	175		252



Source: NSW Water Supply and Sewerage Performance Monitoring Reports

1 kilolitre (kL) = 1000 litres

State Median – NSW state wide median of all local water utilities (excludes Sydney and Hunter Water)

Inland Median – is the median of non-coastal local water utilities.